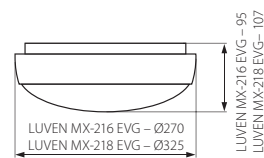


Plafoniera hermetyczna / Hermetic wall & ceiling light fitting

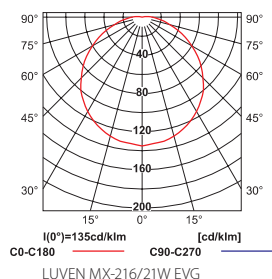


LUVEN MX EVG

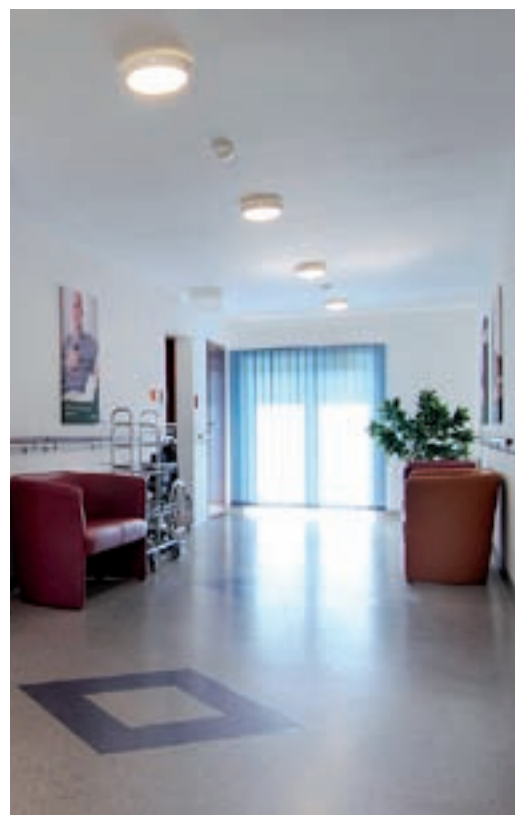
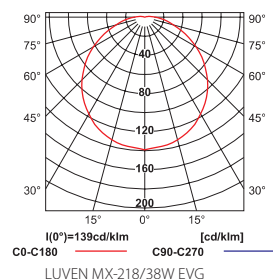


- ▶ podstawa: tworzywo ABS / klosz: poliwęglan (PC)
- ▶ base: ABS material / diffuser: polycarbonate (PC)

krzywa rozsyłu światłości / curve of intensity distribution  
η = 41%



krzywa rozsyłu światłości / curve of intensity distribution  
η = 43%



NEW	LUVEN MX-216/21W EVG	18940
NEW	LUVEN MX-218/38W EVG	18941



biały / white  
biały / white



[W]

21  
38



[g]

846  
1178

220-240V~	50/60Hz	EVG BALLAST	DD	GR10q	Tc [K] 3500	A2	IK	UV RESIST	CE
3 x (1-2,5)	0,5	IP 54	IK 10	-5÷25	1/-/10	UV RESIST	CE		

wysoka odporność na uderzenia / high impact resistance